

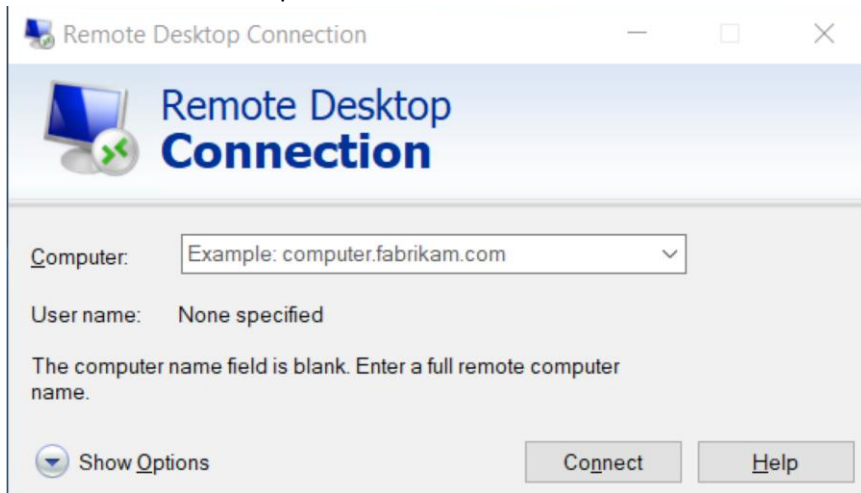
Configuring Remote Desktop Services

Pre-requisites:

- 1) You MUST have an eToken.
 - a. No eToken, please contact your Unit IT Department
- 2) The Target Machine MUST already be enabled for Remote Desktop Access
 - a. This machine has not been previously used for Remote Desktop access, please contact your Unit IT Department
- 3) You MUST be authorized for Remote Desktop Access on the Target Machine
 - a. 1st time connection to a machine and unsure if you are Authorized for that machine, please contact your Unit IT Department

Connect to Remote Desktop Services via RDG

Launch Remote Desktop Client

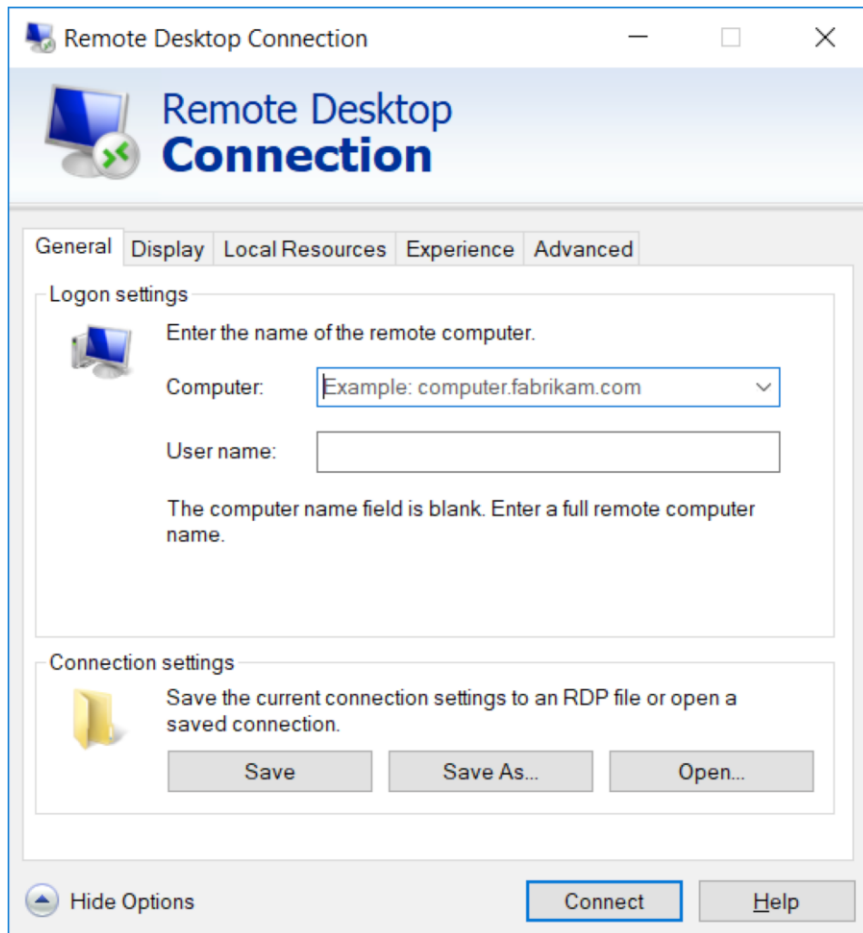


General Tab:

Computer: **{Enter the fully qualified domain name of the computer}**

i.e. CM564D2AE549B2.utorcsi.utoronto.ca

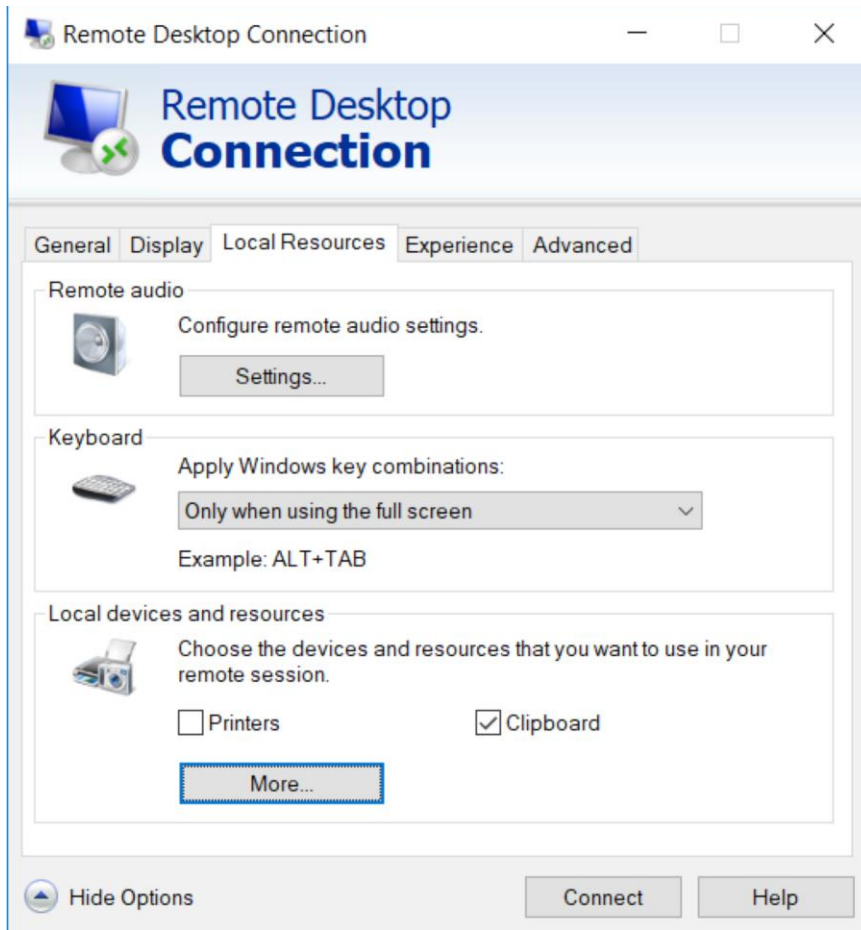
User Name: **{Leave Blank}**



Local Resources Tab:

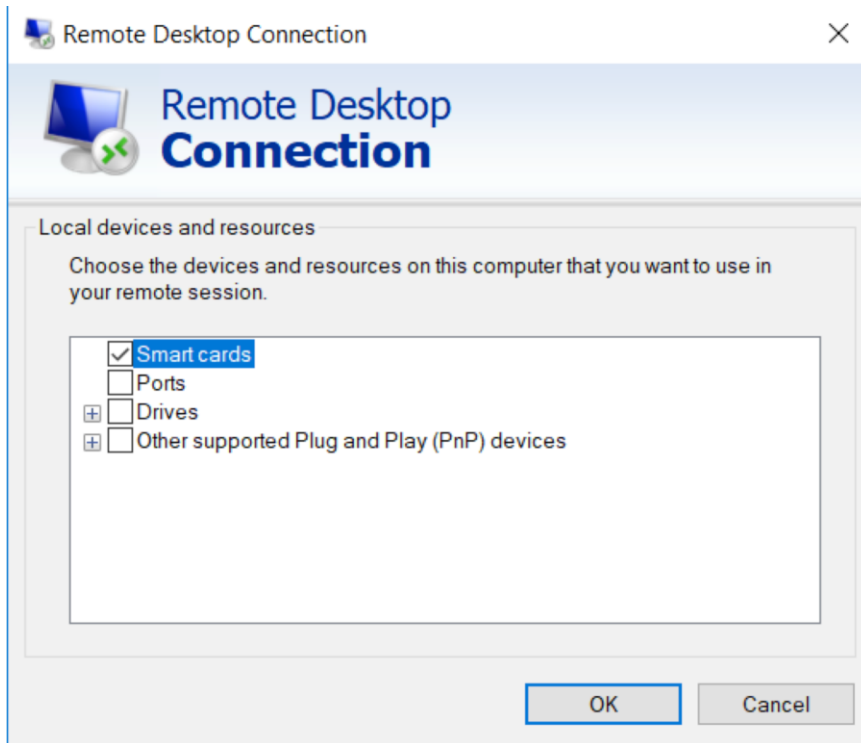
Under Local Devices and Resources

Uncheck Printers and Clipboard



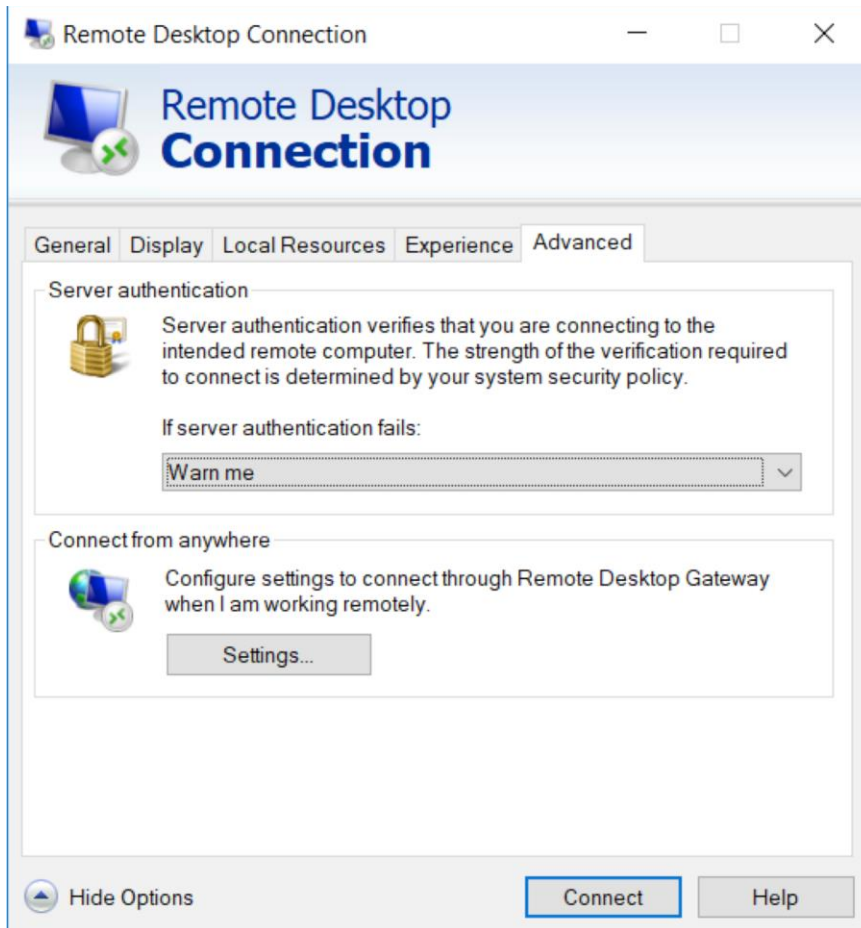
Click More

Ensure "Smart Cards" Checked and all other options unchecked



OK

Advanced Tab:
Settings



Click the **settings**

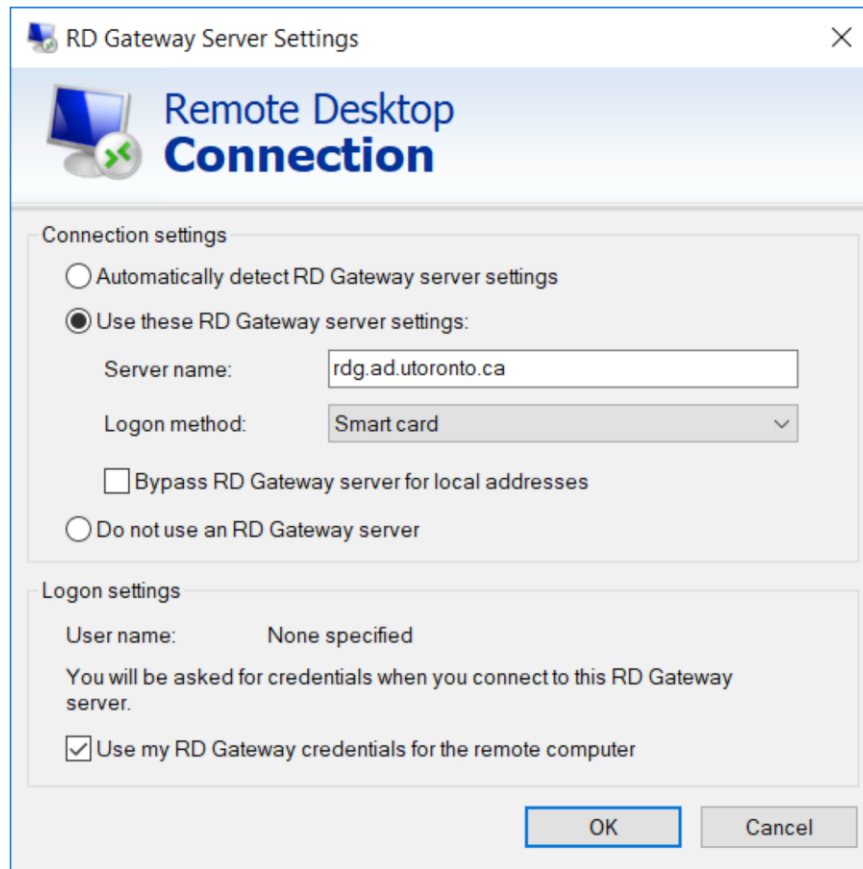
Check Use these RD Gateway Server Settings

Server Name: rdg.ad.utoronto.ca

Logon Method: Smartcard

Uncheck Bypass RD Gateway for local addresses

Check Use my RG Gateway Credentials for the remote computer Ok



Ok

If you are on a dedicated machine (Only you have access to) and you will connect to regularly, (such as your work desktop) use the General Tab, Save As function to save this connection profile to your machine.

NOW you are Ready to Connect

Connecting

Open an existing connection profile or follow profile creation step in previous section
Validate the connection profile setting to ensure you are connecting the intended system

Click Connect

Your experience may vary slightly depending on the Version of Windows you are connecting from however, it should prompt you for eToken PIN

If your client prompt for username/password instead of smartcard PIN, click More Choices and then select your smartcard

Enter Your eToken PIN when prompted

Once you have authenticated to the gateway, it will then attempt to connect to your machine

If your machine is in Enterprise Active Directory it will auto-authenticate and present you your desktop.

If your machine is NOT in EAD or a Trusted Domain, it will prompt you for your machine login, and then once successfully authenticated, you will be presented your desktop.