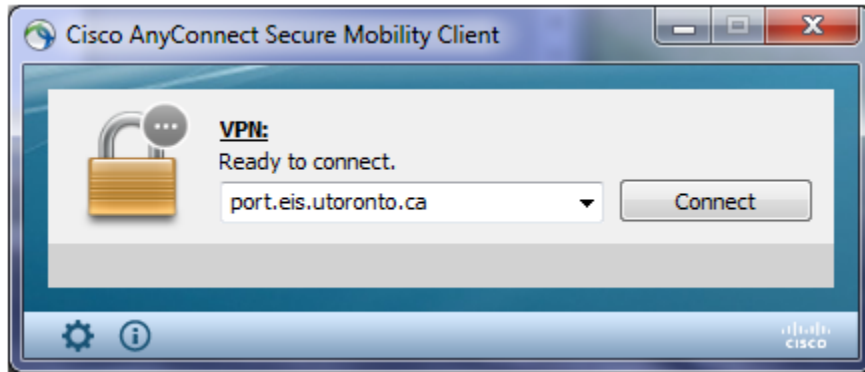
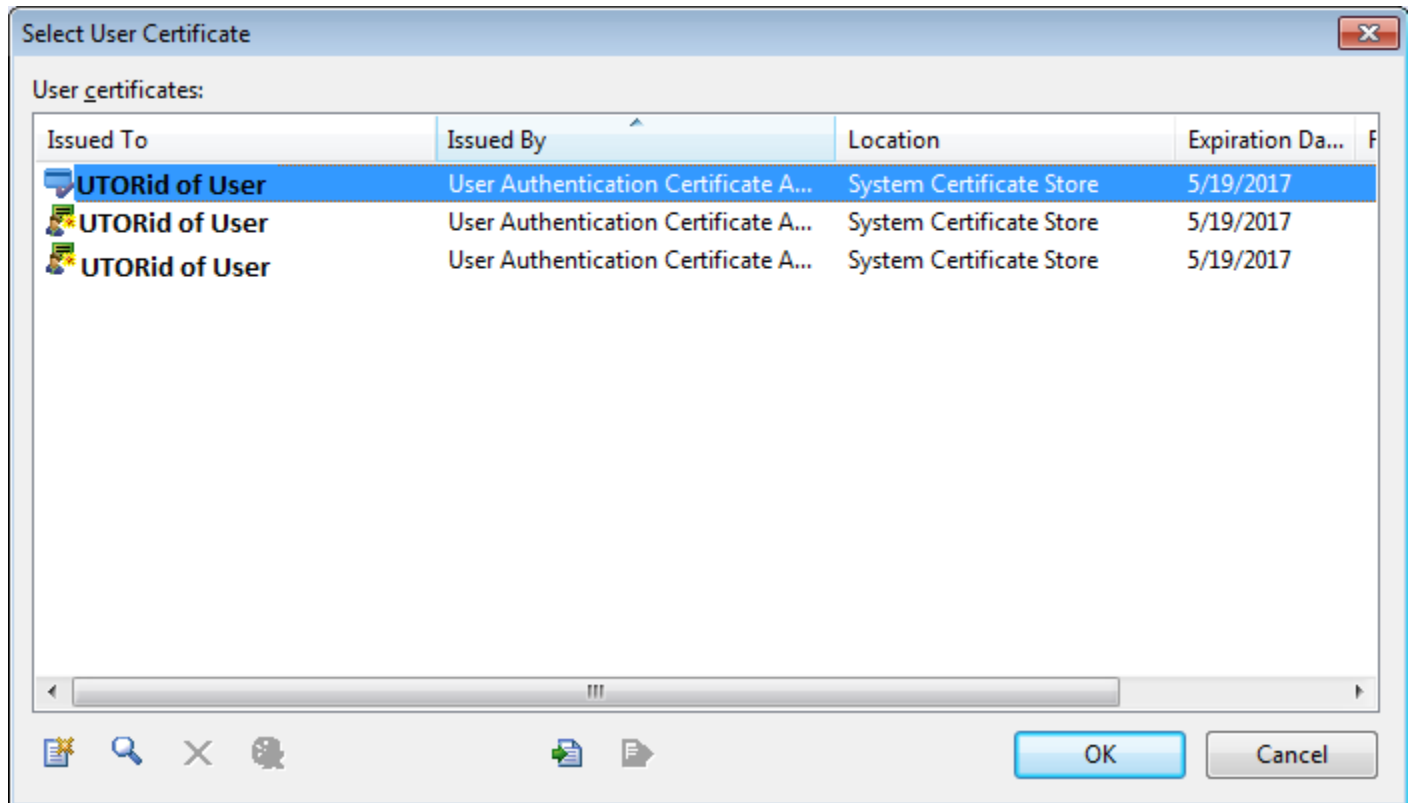


USER INFORMATION: Accessing ROSI using eToken

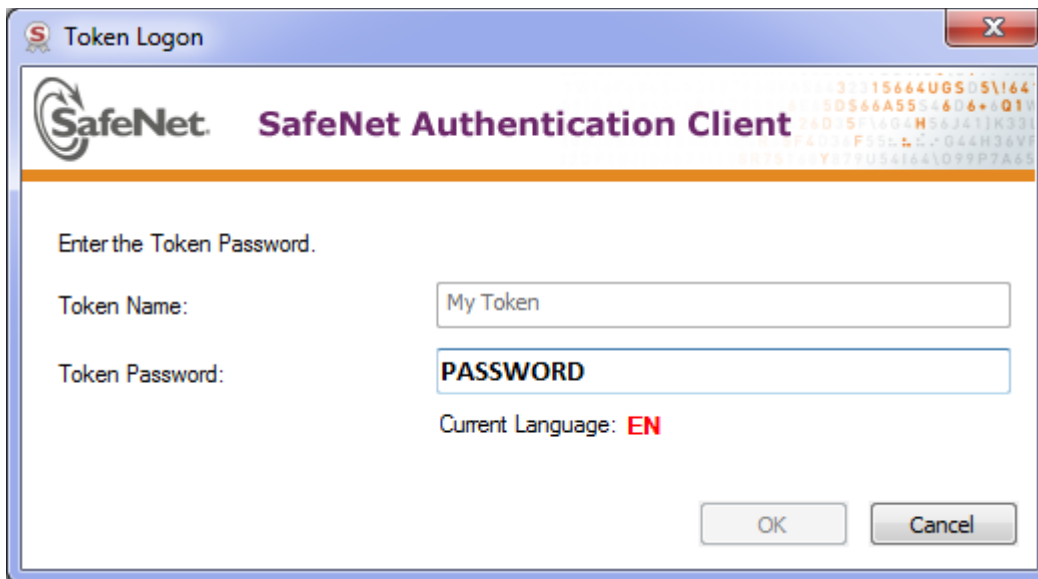
1. Connect eToken
2. Connect to Cisco AnyConnect VPN.



3. Open ROSI client



4. Certificate options are duplicated , select any of the options then Select 'OK'
5. Enter you eToken password. Select 'OK'



6. ROSI reads the eToken directly and removes the step requiring the user to enter their ROSI credentials; logging you into the client automatically
7. Once logged-in the User's ROSI ID will be displayed where highlighted below.

